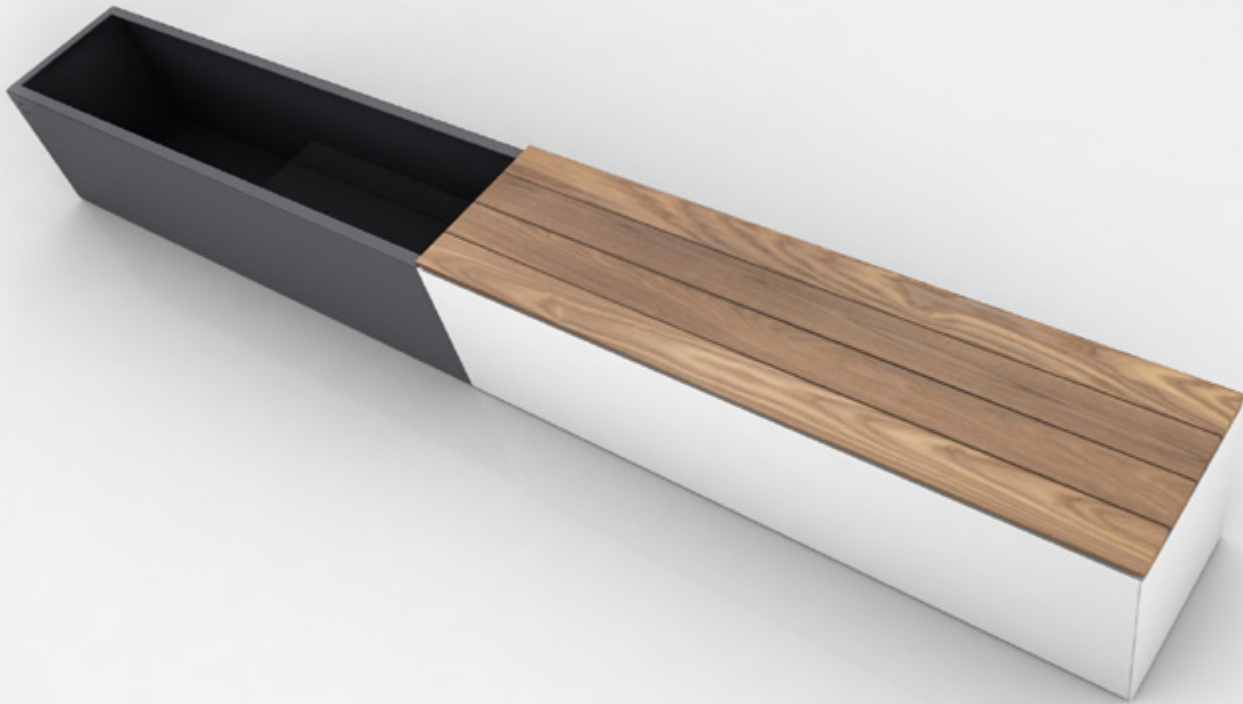


Merge Seating



corten studio

Specification Sheet Version 1
Units Measured in Imperial Inches

Corten Studio reserves the right to revise technical specifications at any time without prior notice. Correct mounting hardware and the method of mounting of the product are imperative to user safety. Use installation instructions to correctly position and install product. ©2021 Corten Studio

Merge Seating was design to be a modular component to the Merge Planter System but holds its own as a stand-alone seating piece if needed. Minimal, elegant, and classic, this series of benches feature a simple base and a bench top with wood that is used in both "end to end" and "front to back" configurations. The Merge Seating size options are determined by the custom profiled timber we use to build them so that proportions remain consistent and thoughtful.

Merge Seating



(01) Materials

Merge Seating is made from 1/4" steel or marine grade aluminum base and thermally modified timber as the seating component.

- Mild Steel
- Aluminum
- Weathering Corten Steel

(02) Standard Powder Coat

- Matte Black
- Gloss White
- Pewter
- Charcoal Gray
- Soybean
- Metallic Silver

(03) Premium Powder Coat

- Obsidian
- Sandstone
- Desert
- Terra
- Dark Oak
- Smoke

(04) Custom Powder Coat

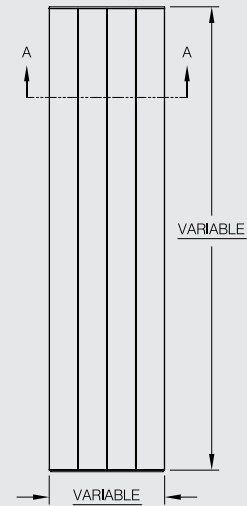
RAL _____

(05) Additional Details & Features

- 1" Top Fold with 1" Return
- No Top Lip
- Integrated Lighting
- Castors
- Drainage Holes
- Toe Kick

(06) Notes / Quantity Needed

Plan View



Side Elevations

